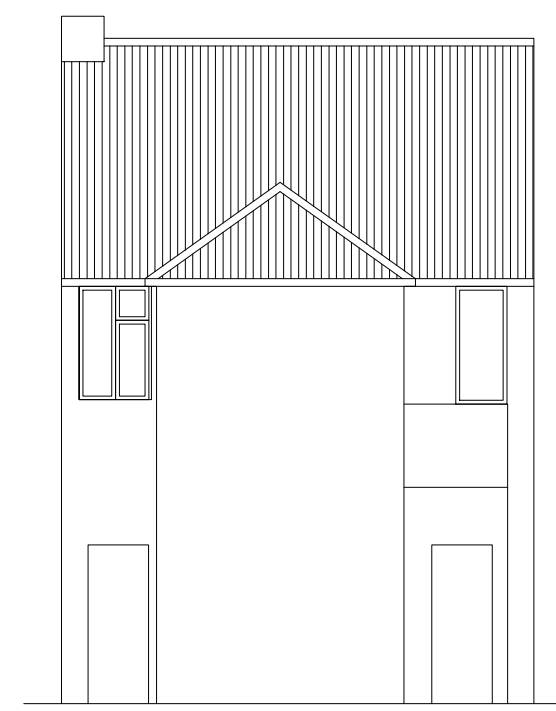


Residential 2 East Facing Elevation 1:100
0 1 2 3 4 5



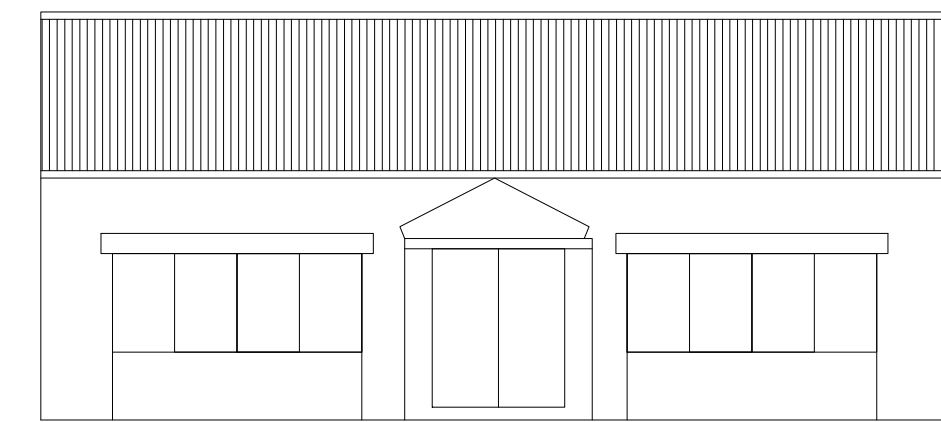
Residential 2 North Facing Elevation 1:100
0 1 2 3 4 5



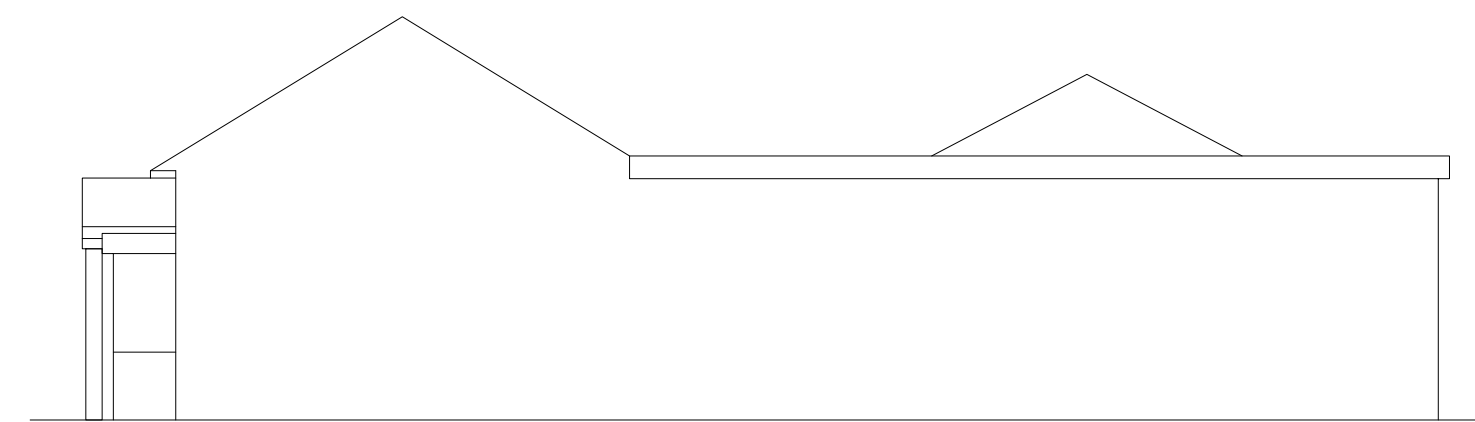
Residential 2 West Facing Elevation 1:100
0 1 2 3 4 5



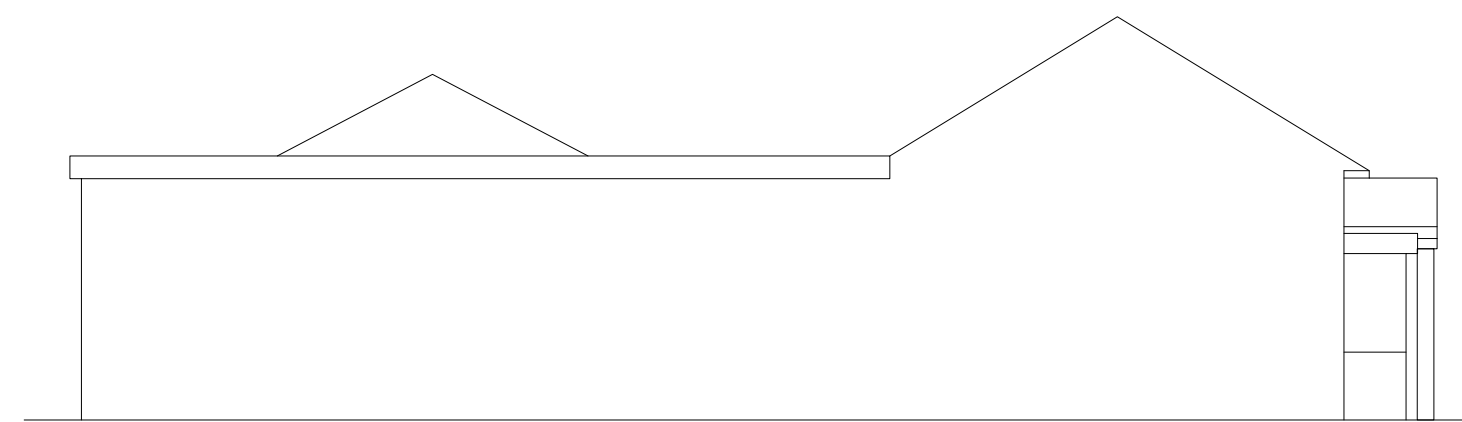
Residential 2 South Facing Elevation 1:100
0 1 2 3 4 5



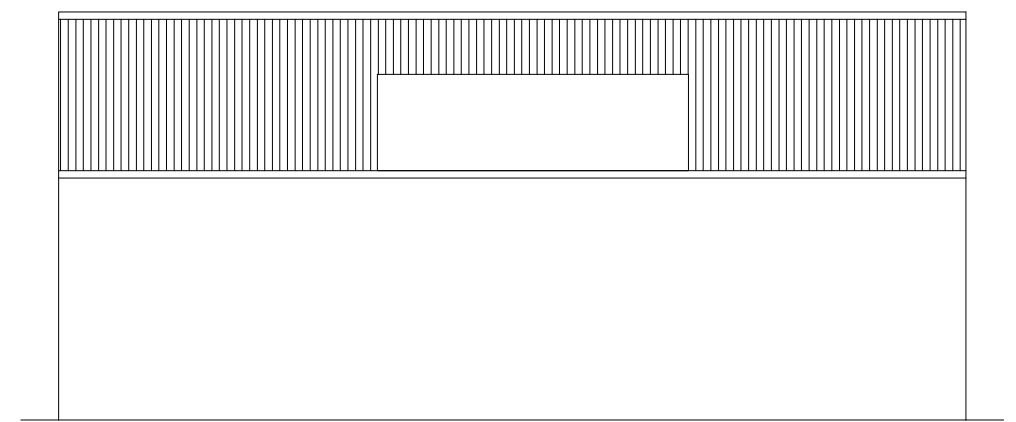
Office 1 South Facing Elevation 1:100
0 1 2 3 4 5



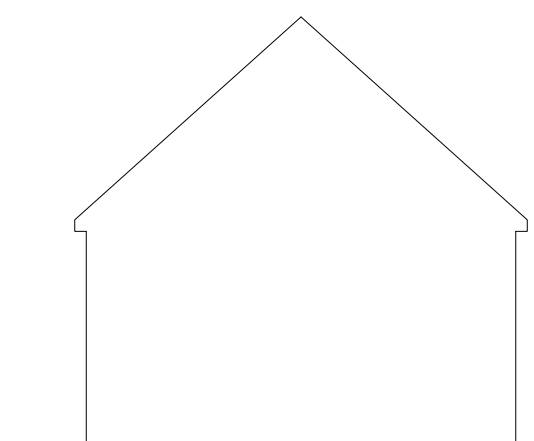
Office 1 East Facing Elevation 1:100
0 1 2 3 4 5



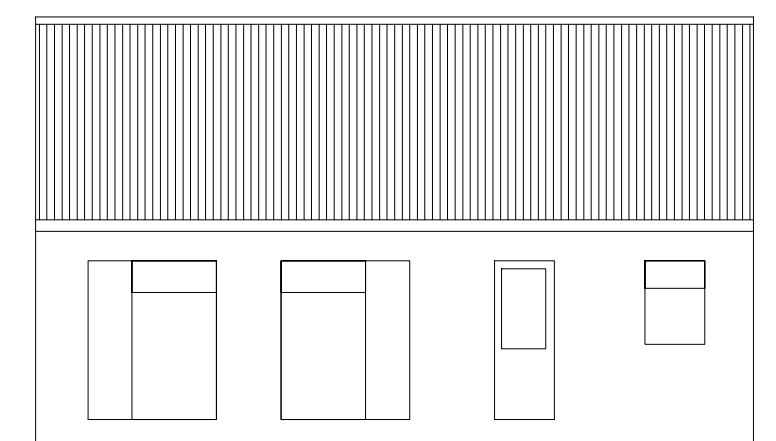
Office 1 West Facing Elevation 1:100
0 1 2 3 4 5



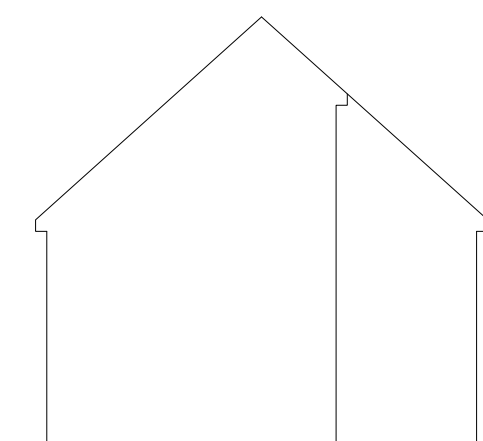
Office 1 North Facing Elevation 1:100
0 1 2 3 4 5



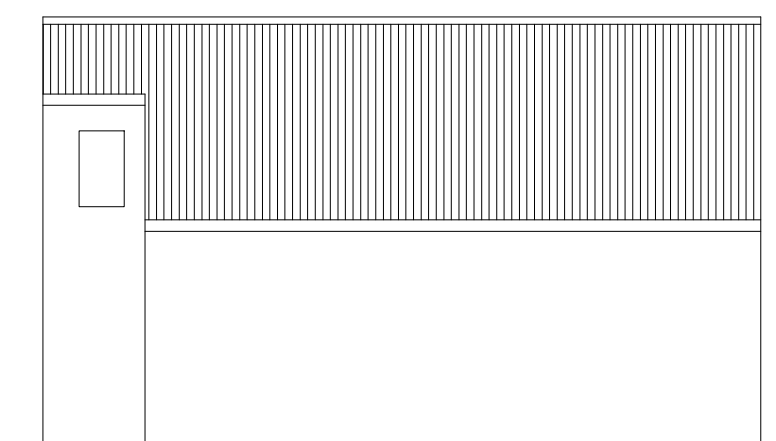
Residential 2 West Facing Elevation 1:100
0 1 2 3 4 5



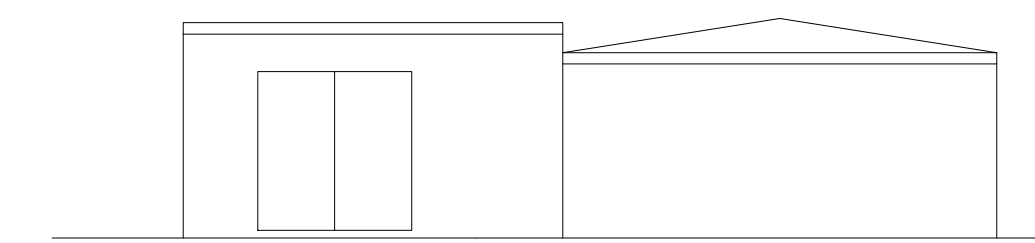
Residential 2 South Facing Elevation 1:100
0 1 2 3 4 5



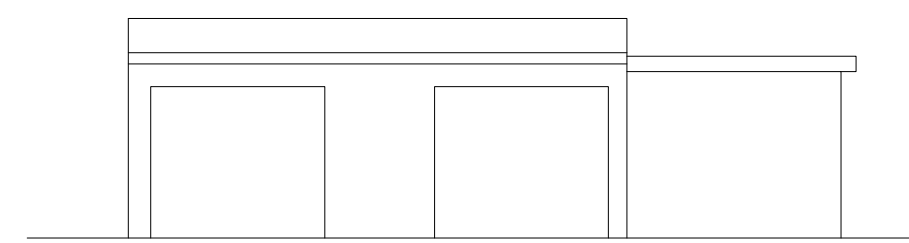
Residential 2 East Facing Elevation 1:100
0 1 2 3 4 5



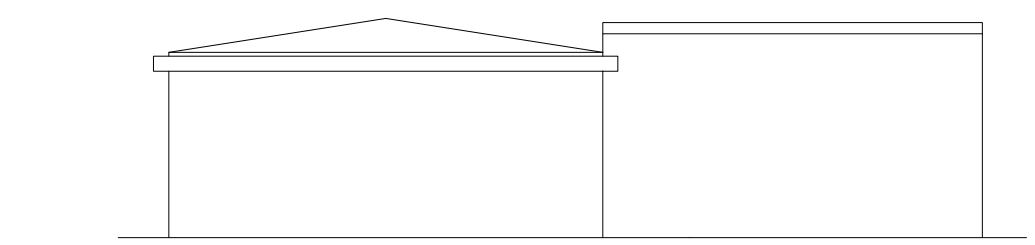
Residential 2 North Facing Elevation 1:100
0 1 2 3 4 5



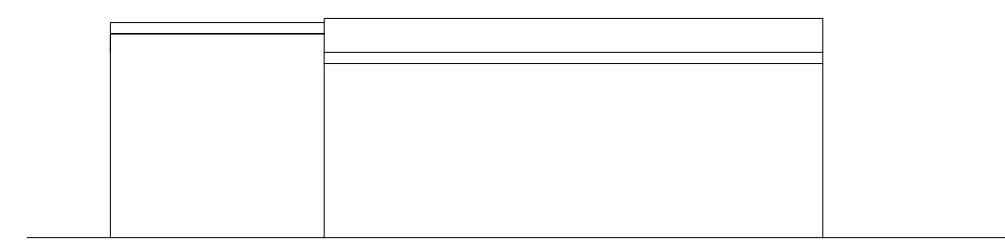
Garages South Facing Elevation 1:100
0 1 2 3 4 5



Garages East Facing Elevation 1:100
0 1 2 3 4 5



Garages North Facing Elevation 1:100
0 1 2 3 4 5



Garages West Facing Elevation 1:100
0 1 2 3 4 5

STATUS: AWAITING APPROVAL

PROJECT STAGE: S1 - Preliminary	DRAWN BY: ABG	CHECKED BY: <input type="checkbox"/>
CLIENT: -		
PROJECT: 1379-1387 London Road	PROPOSED: SS9 9SA	
PROJECT NO: 431-05-17	PAGE NO: 431P02	REVISION: -
DRAWING: Existing		
SCALE: 1:100 on A1		

BUILDER INFORMATION:
DO NOT BUILD FROM ANY DRAWINGS PACKAGES THAT DO NOT SAY, BUILDING CONTROL APPROVED OR IN CONSTRUCTION PACKAGES. IT IS THE RESPONSIBILITY OF THE BUILDER TO CONTACT THE ARCHITECT TO REQUEST/CONFIRM THE RIGHT DRAWING PACKAGE IS ON SITE. PLEASE BE ADVISED THAT ALL DRAWING PACKAGES WILL ALSO HAVE STRUCTURAL ENGINEERING WORKS ATTACHED. DO NOT BUILD WITHOUT ALL PAPERWORK.

DRAWING NOTES:
ALL ITEMS, NOTES, DIMENSIONS AND GENERAL DESIGN CONTAINED IN THIS DRAWING ARE FOR GUIDANCE PURPOSES ONLY. NOMINATED BUILDER AND PERSON RESPONSIBLE FOR THE PROJECT SHOULD MAKE A THOROUGH CHECK PRIOR TO COMMENCEMENT OF WORKS AGAINST SITE, DRAINAGE SERVICE DRAWINGS, CURRENT BUILDING REGULATIONS, BRITISH STANDARDS AND CODES OF PRACTICE. FAILURE TO DO SO WILL BE AT THE LIABILITY OF THE BUILDER/CONTRACTOR NOT THE ARCHITECT.

THE CONTRACTOR IS TO ALLOW WITHIN THEIR PRICE FOR ALL ITEMS NOT LISTED BUT THAT WILL BE REQUIRED TO COMPLETE THE WORK IN ACCORDANCE WITH ALL CURRENT LEGISLATION.