

**AS WE** move into the first five years of our journey to achieving the 2050 vision for Southend, it is essential that providers in adult community care and health services understand how they can participate in the development and delivery of outcome focused services. Our Market Position Statement provides all the necessary links for this to happen.

The Southend 2050 roadmap and strategic delivery plan sets out the outcomes residents want to see achieved in the next five years. All future commissioned services will be assessed in relation to their ability to contribute to the delivery of the 2050 outcomes. I look forward to working with you on our journey.

**ALISON GRIFFIN, CHIEF EXECUTIVE,**  
SOUTHEND-ON-SEA BOROUGH COUNCIL



## SOUTHEND2050 *it all starts here*

Our ambition for Southend 2050 starts with five key themes

### PRIDE & JOY

Southenders will be fiercely proud of, and go out of their way, to champion what our city has to offer.

### SAFE & WELL

People in Southend-on-Sea feel safe in all aspects of their lives and are well enough to live fulfilling lives.

### ACTIVE & INVOLVED

We have a thriving, active and involved community that feel invested in our city.

### OPPORTUNITY & PROSPERITY

Southend-on-Sea is a successful city and we share our prosperity amongst all of our people.

### CONNECTED & SMART

People can easily get in, out and around our borough and we have a world class digital infrastructure.

## Who is the Market Position Statement For?

The MPS promotes opportunities to:

- Existing providers of adult community care services and health related services in Southend-on-Sea and Castle point and Rochford;
- Community Care providers and organisations not currently active in Southend-on-Sea;
- Voluntary and Community Organisations as well as people interested in local business development and social enterprises;
- Private providers;
- Southend residents who are interested in co-producing services

## What do providers need to know?

- Our Southend 2050 ambition (<https://democracy.southend.gov.uk>)
- Locality working (<https://bit.ly/2sjRMbc>)
- Multi-Disciplinary Team working (MDTs)
- Alignment with the Sustainability and Transformation Plan (STP) ([www.nhsmidandsouthessex.co.uk](http://www.nhsmidandsouthessex.co.uk))

## Why do we need a Market Position Statement?

- The Care Act 2014
- The NHS 10 year plan
- To encourage commissioners, people who use services, carers and provider organisations to work together to explain what services and support is needed in the area and why

Local businesses and start ups can access support, grants, training and much more. Contact our Economic Development team via [economicd@southend.gov.uk](mailto:economicd@southend.gov.uk) or visit the website [www.businesssonsea.co.uk](http://www.businesssonsea.co.uk)

Our performance against the Adult Social Care outcomes Framework can be reviewed on <http://ascf.hscic.gov.uk>



For further information on our social value policy please follow this link [www.southend.gov.uk/info/200372/our\\_community](http://www.southend.gov.uk/info/200372/our_community)

For links to our annual procurement plan, electronic procurement portal and Contracts finder, visit:

[www.southend.gov.uk/info/200358/procurement\\_and\\_contracts/481/tender\\_opportunities](http://www.southend.gov.uk/info/200358/procurement_and_contracts/481/tender_opportunities)

This link provides access to our

- Cabinet approved Annual Procurement Plan
- Our Electronic Procurement portal where suppliers can register and therefore receive notification of tendering opportunities. The portal also contains our Council Contracts Register so suppliers can plan for future opportunities
- Link for Contracts Finder which is a UK site where the public sector have to publish opportunities with a value over £25k (£10k for Central Government) and where suppliers can register – market engagement events will also be published via this site



European Opportunities are published on (OJEU): [www.ojeu.eu](http://www.ojeu.eu)

The table below is an example of our Adult Social Care procurement Plans for 2019/20 – this includes contract extensions, new and remodelled services and tender opportunities

**Supported housing pathway for adults with a mental health condition** extended for one year to March 2019 with option to extend for further 2 years.

3 year contract awarded for new **Adult Advocacy Hub** service starts April 2019.



**Recovery College and Mental Health Wellbeing Café** – joint procurement in progress with Southend and Castle Point & Rochford CCGs.

**Supported housing pathway for adults with a learning disability** extended to September 2019, with options to extend further subject to review of service provision.

**West street – supported living for people with a learning disability.** A procurement process will commence late 2018. Current term ends May 2019.

A Remodelled **Floating support** service to reduce debt and prevent homelessness launches April 2019.

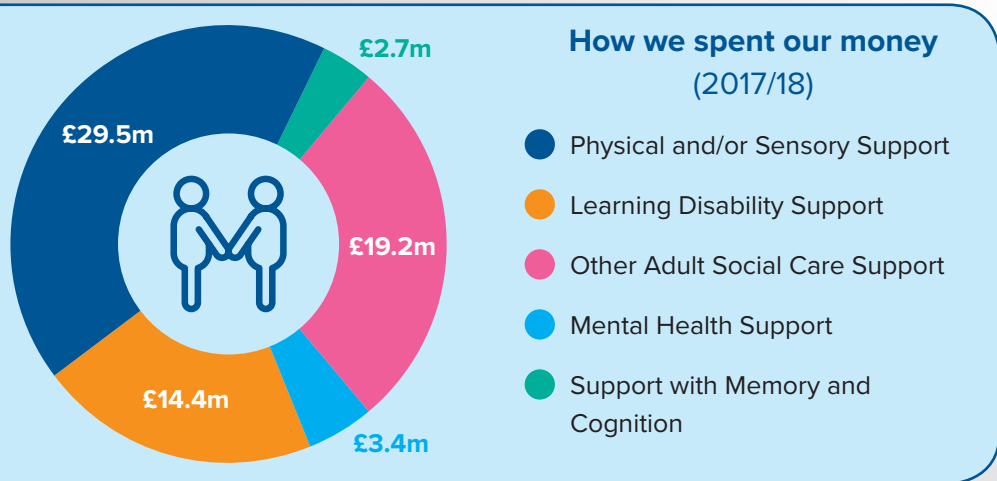


Options on the **Carers Hub** contract are due for review October 2019

**Supported housing for offenders** extended until October 2019 – a procurement process will commence during that time frame.



A new **Integrated Sexual Health service** launches 2019.



Visit our website [www.southend.gov.uk](http://www.southend.gov.uk) for links to published **JSNA** documents, the **Local Account**, population data, our **Contracts Register** and our **procurement intentions and latest opportunities for other commissioned services**, for example children’s services, ICT and digital, Leisure, Regeneration, transport, printing

During the year we will consult with providers to understand how this Market Position Statement contributes to understanding and development of services. If you have suggestions on what else you would like to see, we would welcome your feedback to inform future iterations of our Market Position Statement. Please email [procurementops@southend.gov.uk](mailto:procurementops@southend.gov.uk) if you wish to submit feedback.