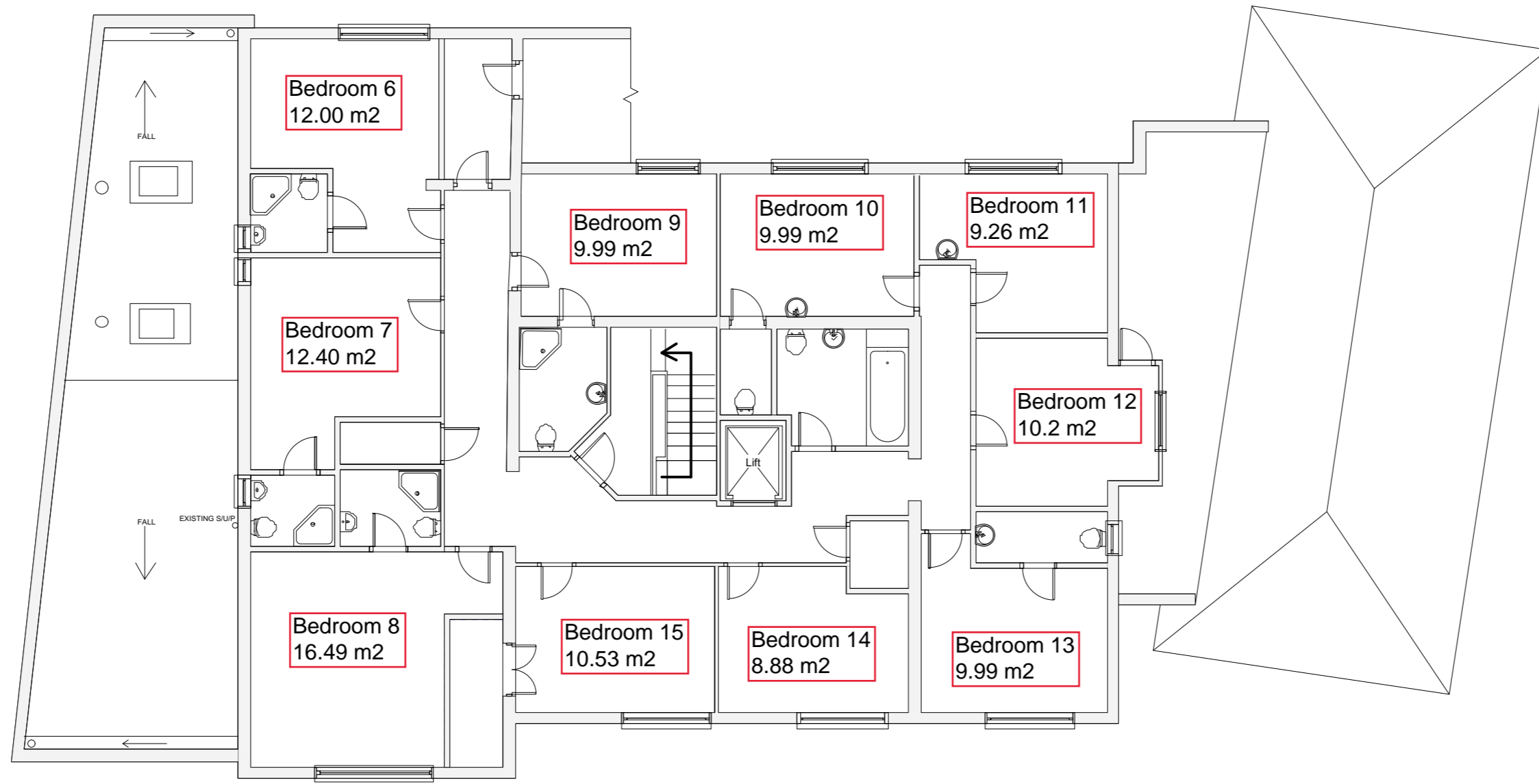
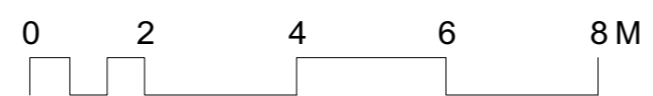


**Proposed Ground Floor Plan**  
1:100 (A2)



**Proposed First Floor Plan**  
1:100 (A2)



**Note:**  
Front entrance doors to have level access with clear door opening width of 775mm. All internal doors on the ground floor to achieve clear opening width of 750mm. All light switches to be positioned max 1200mm above finished floor level. All socket outlets, TV points & BT points to be positioned 450mm above finished floor level. All above to be provided to accord with part 'M' of Building Regulations.