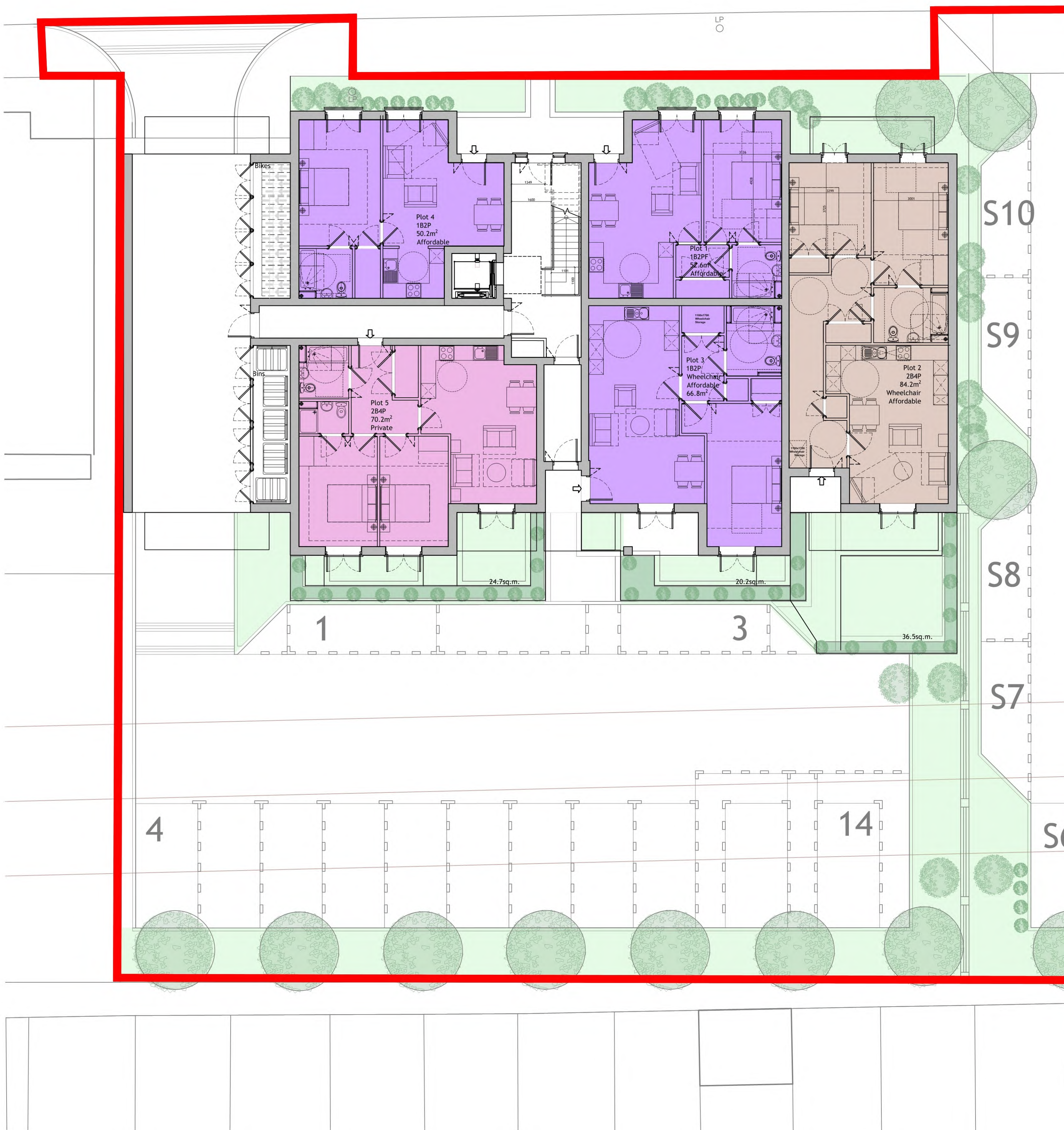


Contractors are to check all levels and dimensions before work is put in hand, and any discrepancies are to be referred to the architects

REV	DATE	DESCRIPTION	DWN	CHKD
P1	02.08.21	Planning Issue	ED	MH
P2	26.08.21	Red line amended	ED	MH

Plot	Type	Tenure	Building Regs Optional Standard	NSA (sq.m.)	NSA (sq.ft.)	Amenity Space (sq.m.)
1	1B2PF	Affordable	Part M4(2)	52.6	566	
2	2B4PF	Affordable	Part M4(3)	84.2	906	36.5
3	1B2PF	Affordable	Part M4(3)	66.8	719	20.2
4	1B2PF	Affordable	Part M4(2)	50.2	540	
5	2B4PF	Private	Part M4(2)	70.2	756	24.7
6	1B2PF	Private	Part M4(2)	52.6	566	2.8
7	3B5PF	Private	Part M4(2)	87.8	945	15
8	2B4PF	Private	Part M4(2)	70.2	756	5
9	2B4PF	Private	Part M4(2)	70.2	756	5
10	3B5PF	Private	Part M4(2)	87.8	945	15
11	1B2PF	Private	Part M4(2)	50.2	540	2.8
12	1B2PF	Private	Part M4(2)	52.6	566	2.8
13	3B5PF	Private	Part M4(2)	87.8	945	12.9
14	2B4PF	Private	Part M4(2)	70.2	756	5
15	2B4PF	Private	Part M4(2)	70.2	756	5
16	3B5PF	Private	Part M4(2)	87.8	945	12.9
17	1B2PF	Private	Part M4(2)	50.2	540	2.8
Total				1161.6	12503	168.4
Building GIA Including Undercroft						
Ground Floor				478.4	5149	
First Floor				491.2	5287	
Second Floor				491.2	5287	
Total				1460.8	15724	
Circulation				234.1	2520	
Undercroft				65.1	701	
Building GIA Excluding Undercroft				1395.7	15023	
Net to Gross						83.2%



Planning



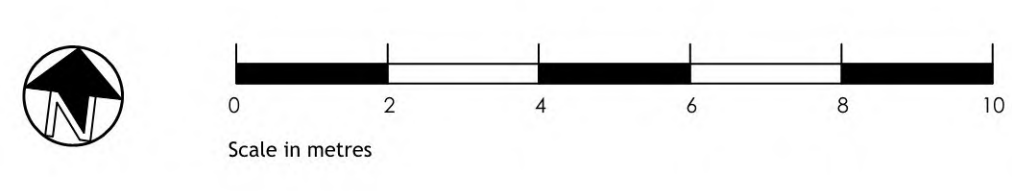
Architects + Interior Designers Limited
 123 NEW LONDON ROAD, CHELMSFORD,
 ESSEX. CM2 0QT
 TEL: +44 (0) 1245 269755 FAX: +44 (0) 1245 250310
 E-MAIL: admin@lap-architects.co.uk
 www.lap-architects.com

project
 Site at 53 - 57 Sutton Road
 Southend-on-Sea
 Essex

client
 Charterhouse Property Group

drawing title
 Proposed Flats -
 Ground Floor Plan

drawing number 9011 / P30	revision P2
scale 1:100 @ A1	checked JY
	drawn ED
	date August 2021



This drawing is the property of LAP Architects + Interior Designers Ltd. and must not be copied or reproduced in any way in whole or in part without the express permission of LAP Architects + Interior Designers Ltd. Copyright © LAP Architects + Interior Designers Ltd.