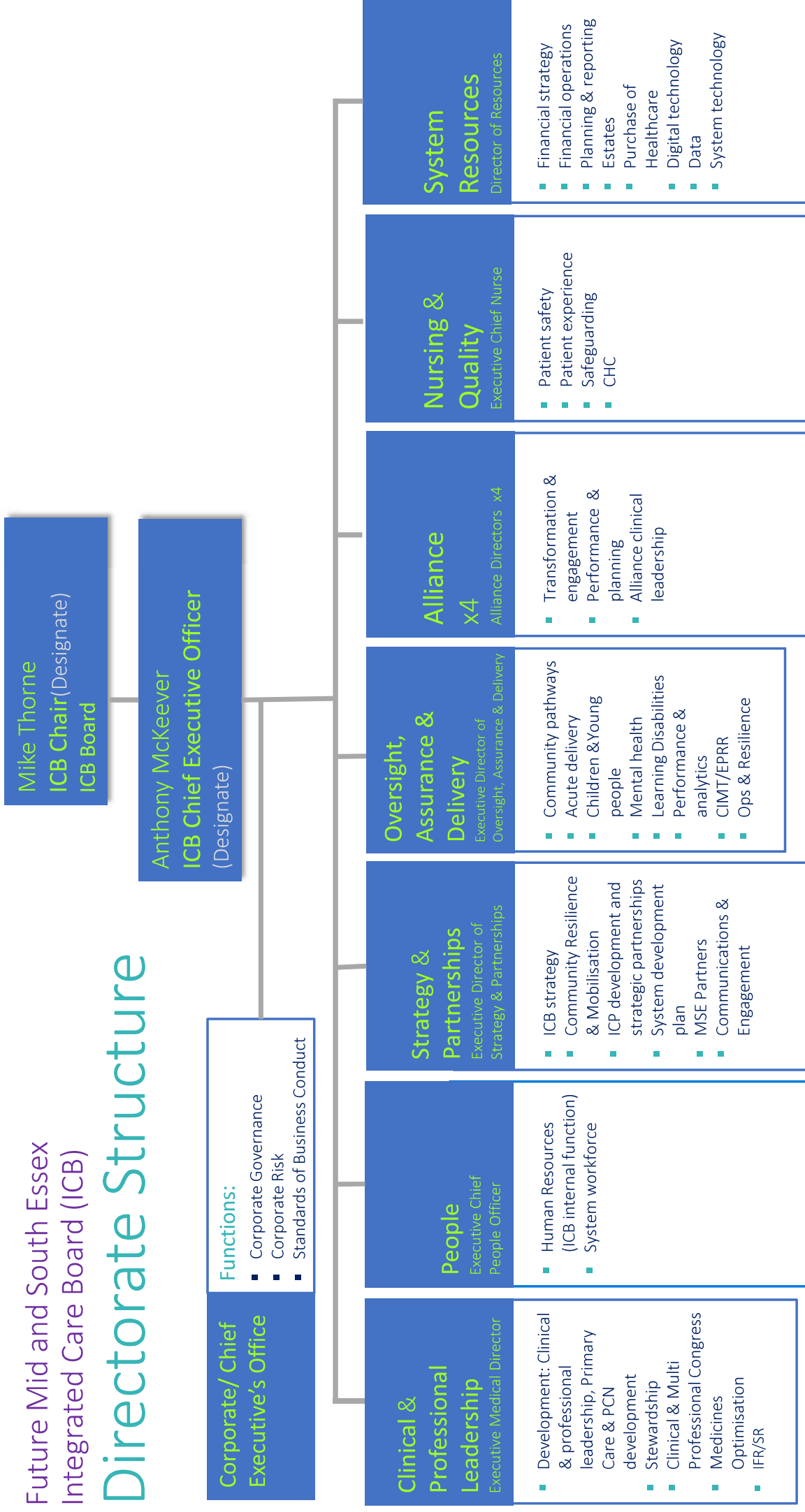


Future Mid and South Essex  
Integrated Care Board (ICB)

# Directorate Structure



### Corporate/Chief Executive's Office

#### Functions:

- Corporate Governance
- Corporate Risk
- Standards of Business Conduct

### Clinical & Professional Leadership

Executive Medical Director

- Development: Clinical & professional leadership, Primary Care & PCN development
- Stewardship
- Clinical & Multi Professional Congress
- Medicines
- Optimisation
- IFR/SR

### People

Executive Chief People Officer

- Human Resources (ICB internal function)
- System workforce

### Strategy & Partnerships

Executive Director of Strategy & Partnerships

- ICB strategy
- Community Resilience & Mobilisation
- ICP development and strategic partnerships
- System development plan
- MSE Partners
- Communications & Engagement

### Oversight, Assurance & Delivery

Executive Director of Oversight, Assurance & Delivery

- Community pathways
- Acute delivery
- Children & Young people
- Mental health
- Learning Disabilities
- Performance & analytics
- CIMT/EPRR
- Ops & Resilience

### Alliance x4

Alliance Directors x4

- Transformation & engagement
- Performance & planning
- Alliance clinical leadership

### Nursing & Quality

Executive Chief Nurse

- Patient safety
- Patient experience
- Safeguarding
- CHC

### System Resources

Director of Resources

- Financial strategy
- Financial operations
- Planning & reporting
- Estates
- Purchase of Healthcare
- Digital technology
- Data
- System technology