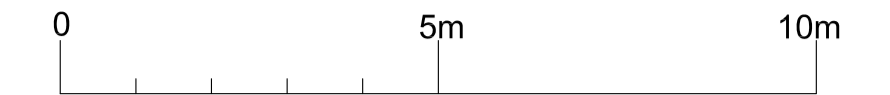
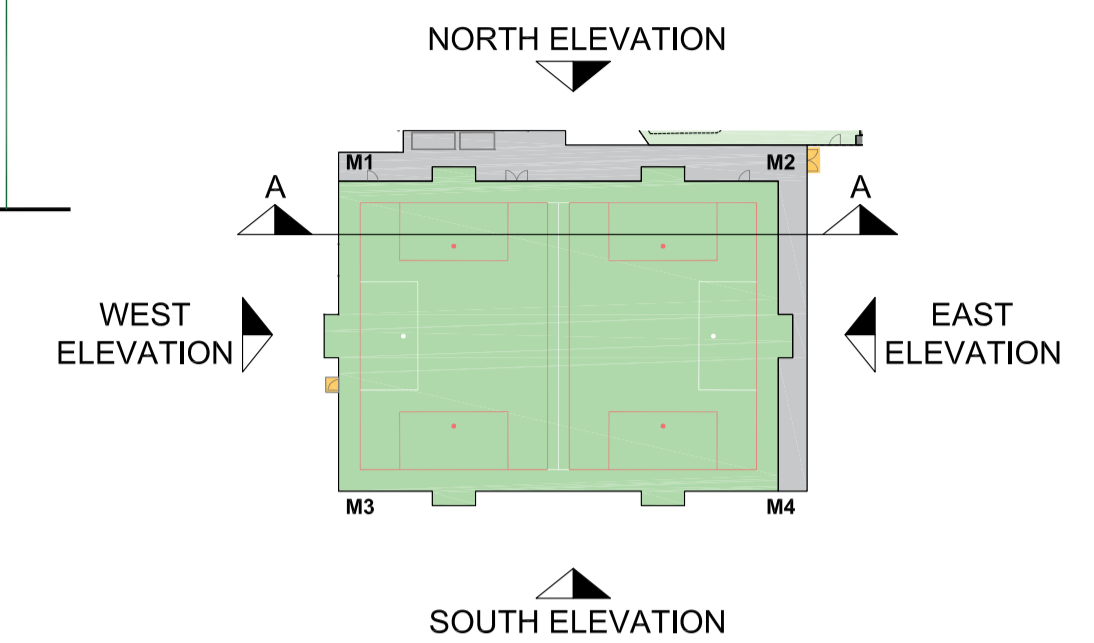
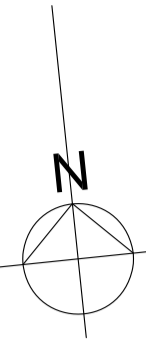


ALL WORKING DIMENSIONS TO BE CHECKED ON SITE.
 FIGURED DIMENSIONS TO BE TAKEN IN PREFERENCE TO SCALED
 DIMENSIONS.
 ANY DISCREPANCIES BETWEEN DRAWINGS OF DIFFERING SCALES
 AND BETWEEN DRAWINGS AND SPECIFICATION WHERE
 APPROPRIATE TO BE NOTIFIED TO SUPERVISING OFFICER FOR
 DECISION.
 COPYRIGHT RESERVED.



SCALE BAR 1:100



KEYPLAN - NTS

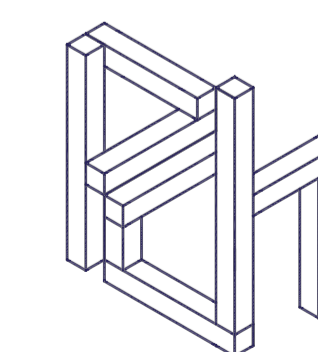
Rev	Date:	Notes:
3	04/08/2022	Updated section.
2	06/05/2022	Updated west elevation.
1	27/04/2022	Updated elevations/title, added lighting masts/specification.
0	18/01/2022	Initial Issue.

REVISION HISTORY

**NEW 60X40 YARD FLOODLIT
 3G FTP
 at
 PRINCE AVENUE PRIMARY
 HORNBY AVENUE
 SOUTHEND-ON-SEA
 WESTCLIFF-ON-SEA, SS0 0LG**

**SOUTH EAST ESSEX ACADEMY
 TRUST**

**7v7 3G FTP
 ELEVATIONS**



PCH
 ASSOCIATES
 LTD

01638 667676
www.pchassociates.co.uk
info@pchassociates.co.uk

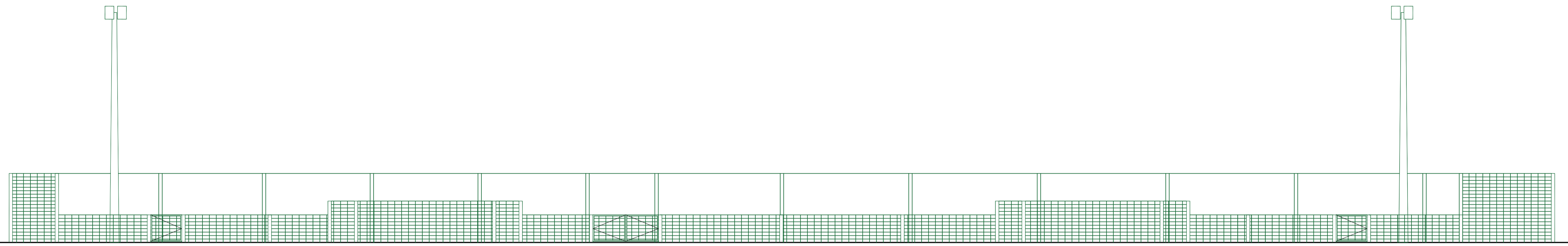
AUGUST 2022 EM

1:100 @ A1 DT

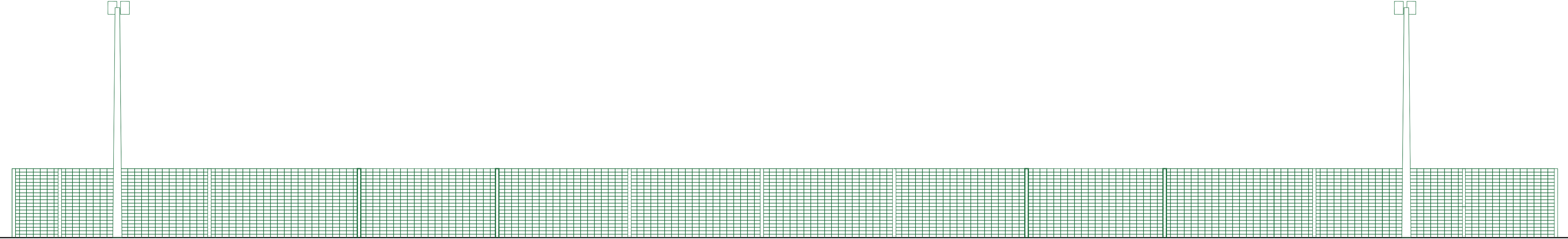
201-15_PL-05.R3

NOTES:

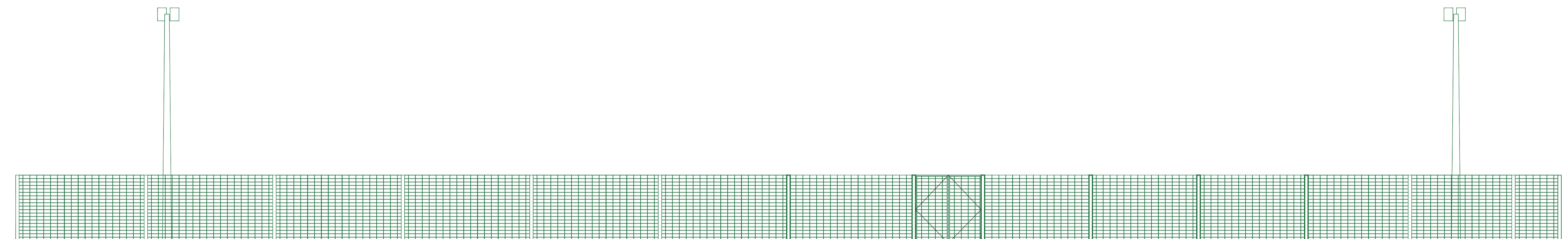
Floodlighting Equipment
 4 x 10m Masts (M1-M4)
 Each carrying the following Floodlights ->
 M1-M4
2 x FL11 MAXI PL33T 2 BRICK BLC
 Lamps = SITECO LED - 100,000 Lumen
Illuminance Levels
Initial -
 (100hrs) E.J.ave = 257Lux
Maintained -
 (4000hrs) E.J.ave = 231Lux
Uniformity
 Emh/Eave = 0.66
 Grid values in Lux(initial),
 Grid Interval = 5m,
 Contour values in Lux (initial),
 Contours: 5, 15, 25, 50 Lux,
Maintenance Factor = 0.90



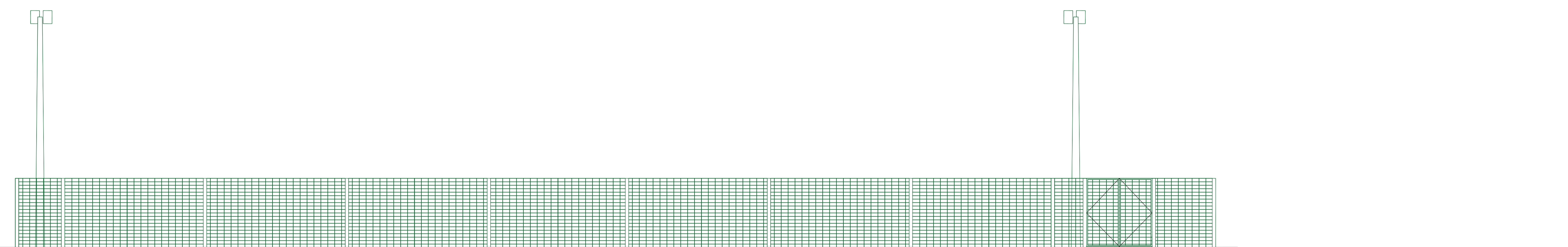
SECTION A-A



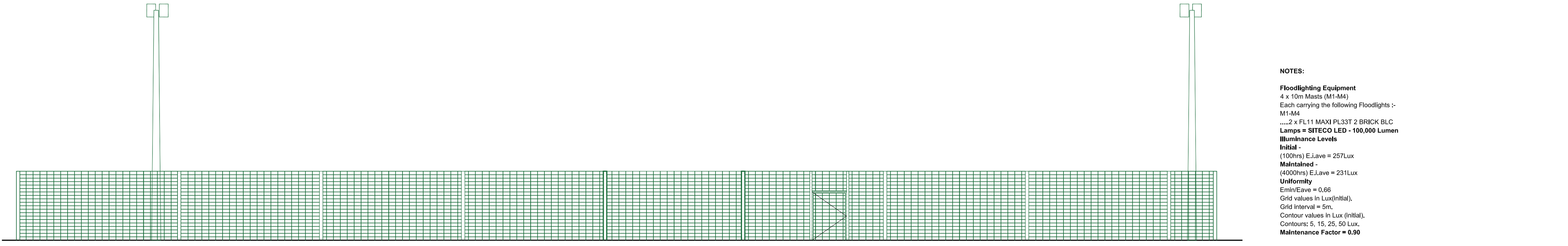
SOUTH ELEVATION



NORTH ELEVATION



EAST ELEVATION



WEST ELEVATION